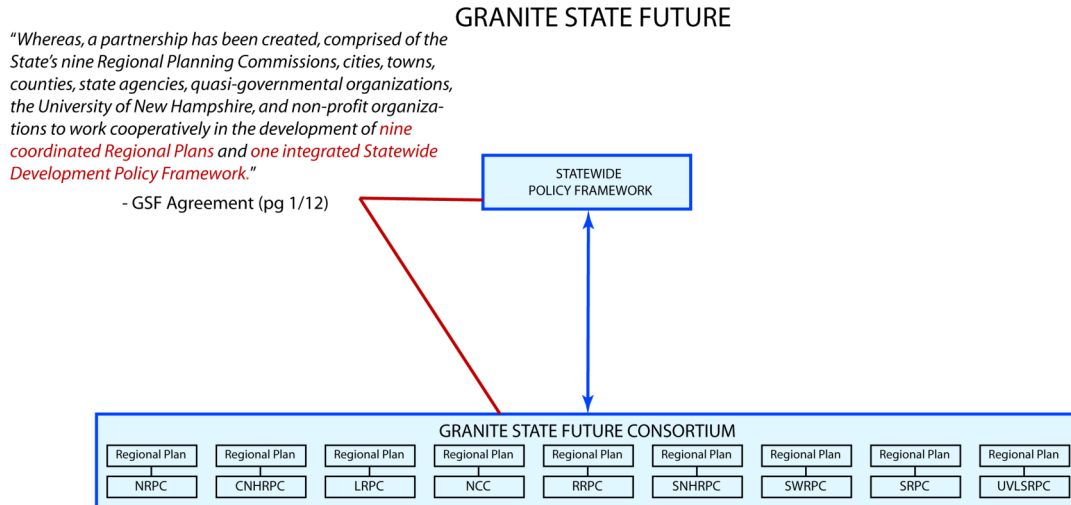


## LOSS OF ELECTED REPRESENTATION

The stated overall goal of the GSF program is to produce nine regional plans and one integrated Statewide Development Policy Framework. Who will make these decisions, and how will the people be represented? Let's take a look at the GSF/SCI documentation that defines how this program will be implemented.



One of the "Mandatory Outcomes" of the SCI program requires;

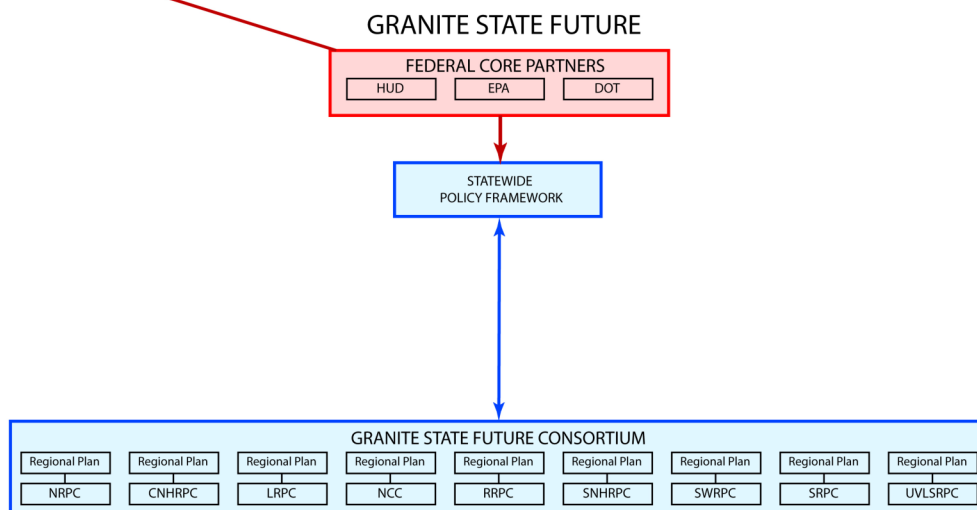
*"Aligned federal planning and investment resources that mirror the local and regional strategies for achieving sustainable communities." – HUD NOFA (pg 60, "Mandatory Outcomes" section)*

It is mandated that the local and regional plans must mirror federal planning. When this HUD mandate is combined with the GSF overall goal listed above (nine regional plans integrated into one Statewide Policy Framework), the result will be all plans for Local, Regional, and State will be aligned with HUD's Federal Planning for achieving sustainable communities.

This is a top-down program. It is not a grass roots, "advisory only" program as proponents claim.

*"HUD is committed to ensuring that programs result in the achievement of HUD's strategic mission."*  
 – HUD NOFA document (pg 63)

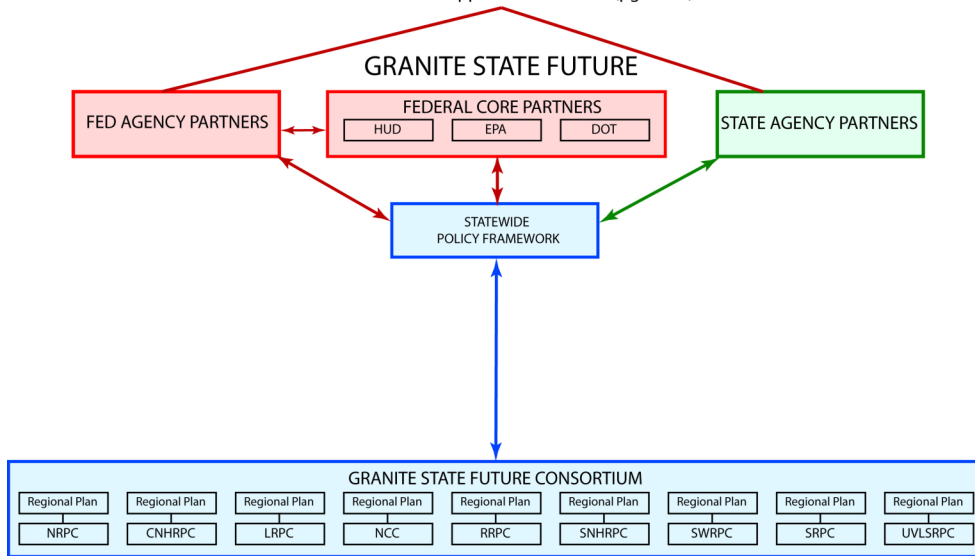
*"The Cooperative Agreement allows for **substantial involvement of HUD staff** to enhance the performance of the grantee in the completion of their deliverables."*  
 - HUD Terms and Conditions document (pg (18/27)



The RPCs are comprised of hired bureaucrats, and appointed representatives from each member town. The RPCs operate one level removed from local elected government.

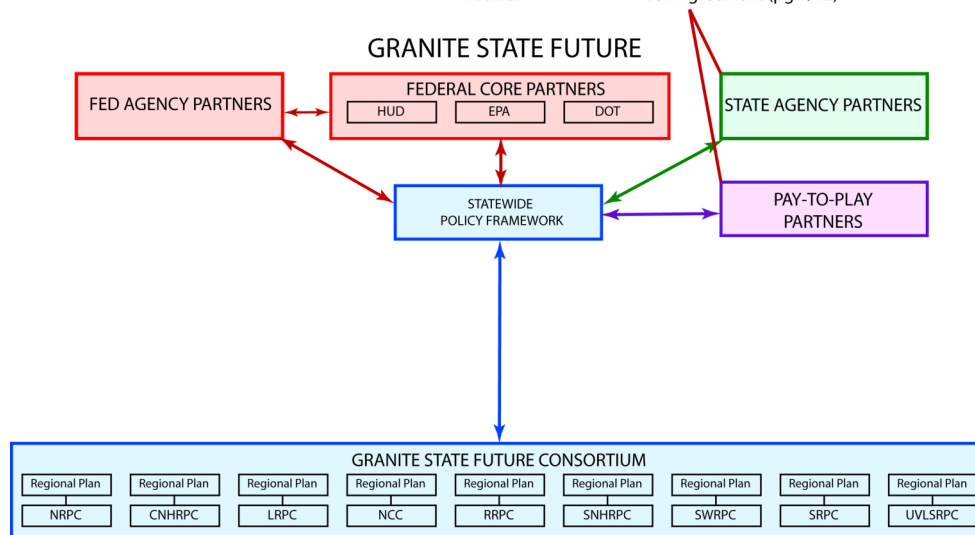
The GSF/SCI program specifically empowers Federal and State Agencies to directly integrate their policies into each Regional Plan. Conversely, each Regional Plan will be integrated back into the Federal and State Agency partner programs. This enables direct Federal and State (unelected) bureaucratic input into local, regional and Statewide policy planning with little to no oversight from elected Local and State government.

*"Each of the regional planning commissions will integrate its Regional Plan for Sustainable Development (RPSD) into other federal and state funded initiatives, as well as, integrate the work of these other programs into the RPSD."*  
 - Grant Application Narrative (pg 25/27)



Hand-picked Special Interest Groups are chosen by a secret committee to become a Pay-To-Play partner, that is empowered with direct input into the local, regional and statewide planning process... again, with little to no oversight from local and state elected government.

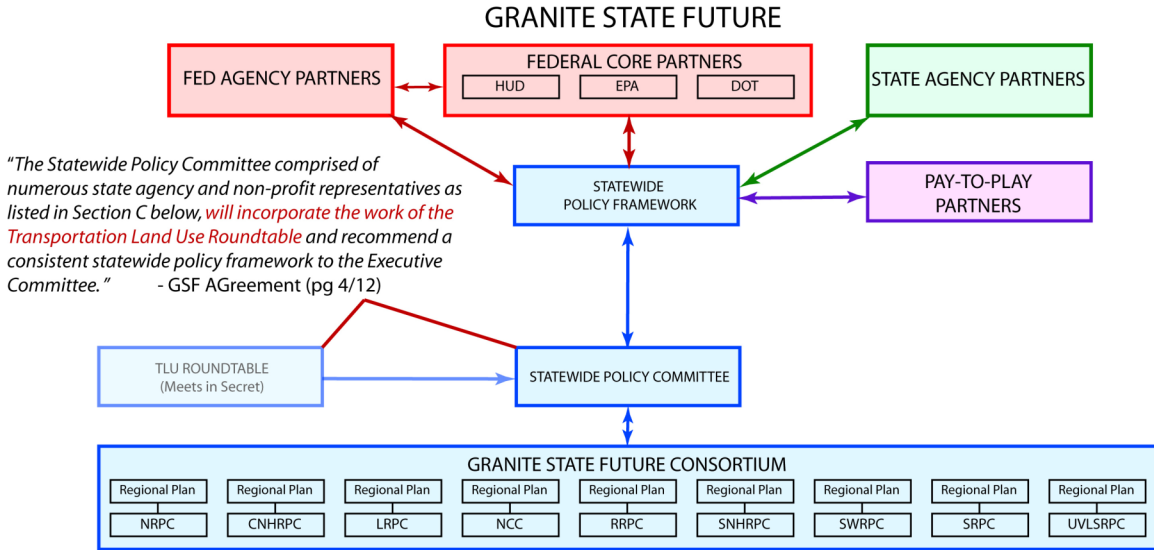
*"Whereas, statewide partner agencies and organizations commit to participating in this cooperative effort by actively engaging in the statewide advisory committees and integrate recent findings and recommendations between their ongoing programs with those of A Granite State Future."*  
 - GSF Agreement (pg 1/12)



The provisions that bypass our local and state elected representatives, and empower direct input from Federal Agencies, Special Interest Groups and the RPCs into statewide policy are violations of the NH Constitution; Article 2 [Natural Rights], Article 7 [State Sovereignty] and Article 8 [Accountability of Magistrates and Officers; Public's Right to Know].

The structure of the GSF program was designed by the TLU Roundtable, which meets in secret with no history of meeting minutes for public review. The TLU Roundtable is comprised of people that represent virtually all of the GSF program's State Agencies and "Pay-To-Play partners -- giving these organizations a considerable amount of non-public, unelected bureaucratic influence/control over local, regional and statewide planning.

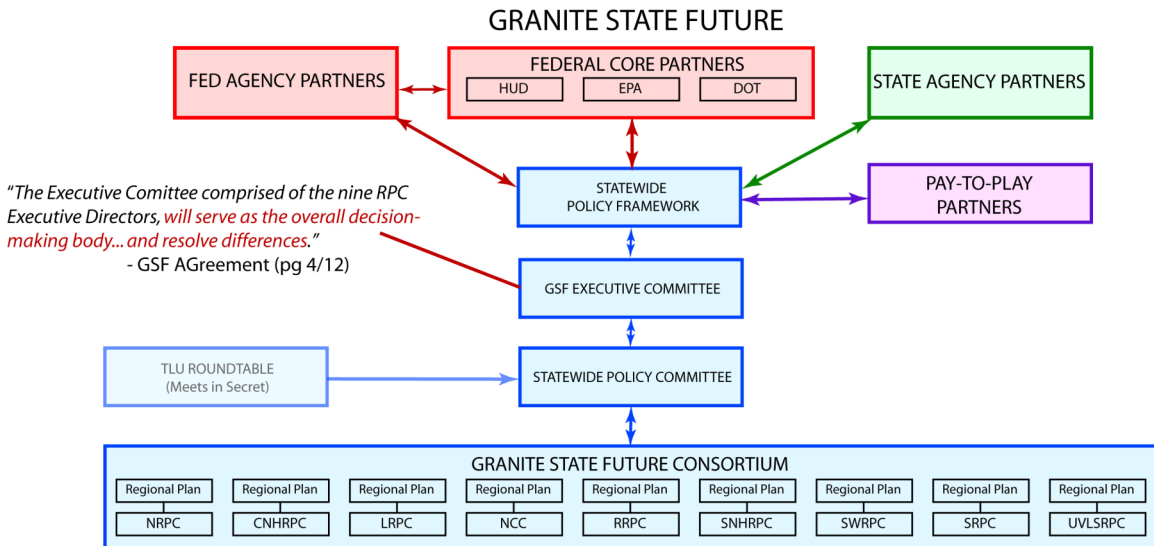
**The Statewide Policy Committee** will incorporate the work of the TLU Roundtable. This committee is comprised of unelected bureaucrats and operates two levels removed from local elected government.



**The Executive Committee** is empowered with overall decision-making authority.

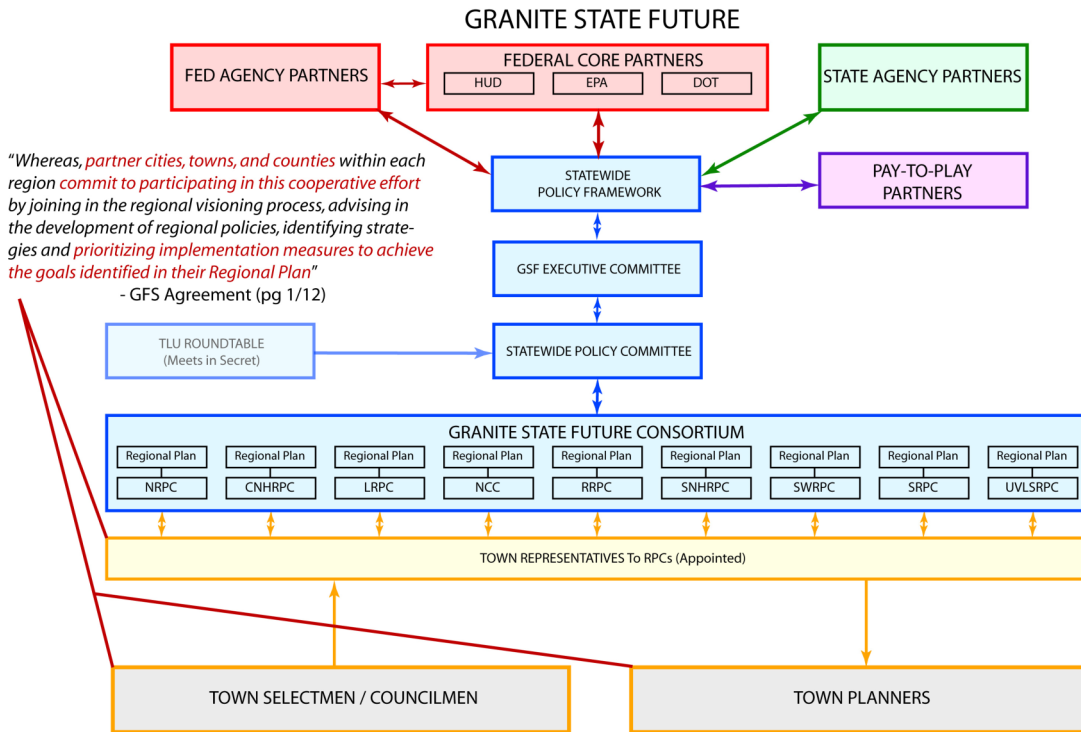
**"The Executive Committee** comprised of the nine **RPC Executive Directors**, will serve as the **overall decision-making body** to allocate resources, set goals, **guide program alignment between regions**, monitor progress, establish common methodologies, ensure overall coordination and efficiencies, **and resolve differences.**" – GSF Agreement (pg 4/12)

The Executive Committee is comprised of unelected bureaucrats and operates three levels removed from local elected government.



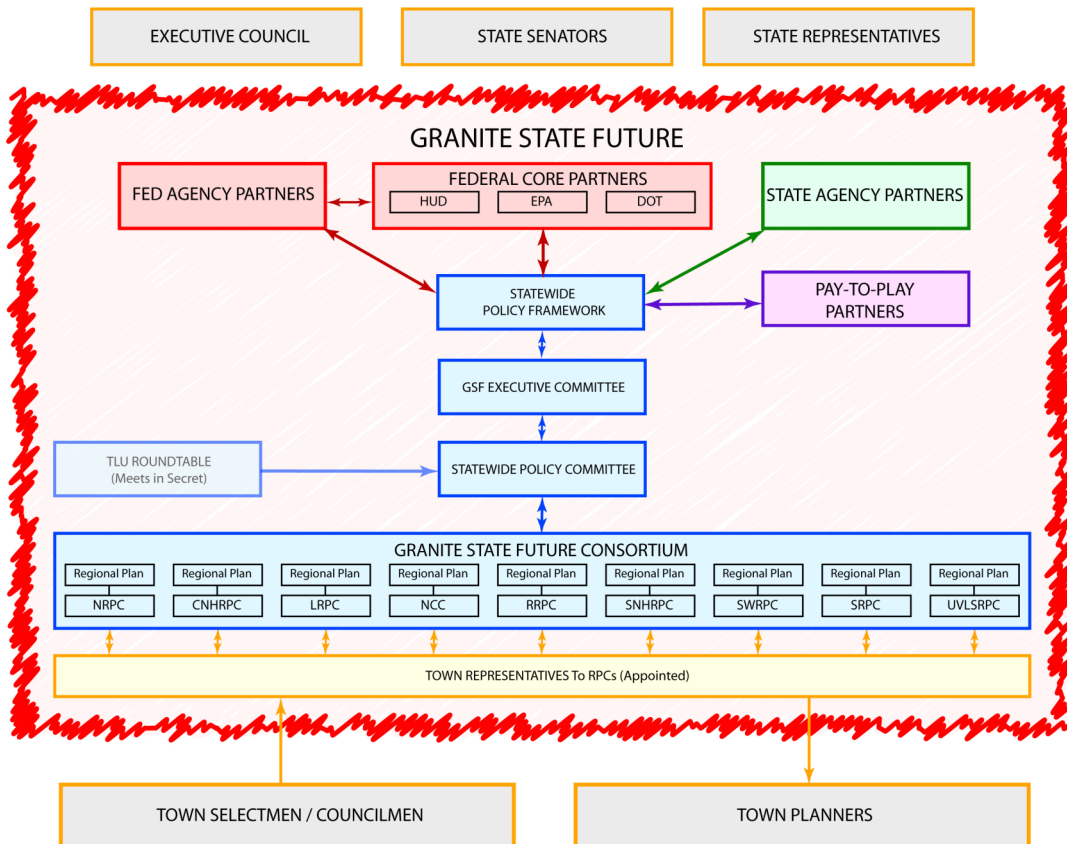
Each participating town has appointed representatives to their respective RPC, WHETHER OR NOT they sign the GSF Agreement. Towns are enticed to sign the Agreement so they can “have a seat at the table”, even though there is no guarantee that signatory towns will have representation on any of the committees.

By signing the Agreement, towns commit to implement the plan – **before** it is defined.



This GFS structure of the GSF program was designed in secret. The planning process excludes direct input from virtually every elected official; Selectmen, Planning Board, State Reps, Senators and Executive Council.

*"HUD is committed to ensuring that programs result in the achievement of HUD's strategic mission."* - NOFA (pg 63)



Mr. Bernie Campbell, Windham's Town Attorney, was asked two questions regarding the GSF Agreement prior to a decision being made;

1. Upon signing the GSF Agreement, will a town become legally and financially obligated / liable to the contractual terms that are defined in the SCI "legally binding" Agreement that was signed by HUD and the Nashua RPC?
2. Ken Eyring, a Windham resident, raised concerns that aspects of the GSF program may NOT be "advisory only", and that potential impacts and/or consequences may arise out of the program that could be forced upon NH's towns.

The program's proponents are fond of referring to Mr. Campbell's response to the first concern, but never address his response to the second (shown below, taken from a letter to the Windham Board of Selectmen):

**"The observation of Mr. Eyring and others that there may be "impacts" or "consequences" from the plan that is developed may well be legitimate, but it is important to understand that these consequences will not flow from participation in the planning process. In fact, a study of the "Scope of Work" document available at the NRPC website reflects an anticipated "final implementation" phase which includes an expectation that State funding initiatives will align with the outcomes as called for in the adopted Statewide plan. These "consequences" are not related to the agreement to participate, but most certainly could be consequences of the final outcome."**

Mr. Campbell's observations were, in part, based upon the following excerpt;

*"The EC (Executive Committee) will seek endorsement of the plan by the NH Council on Resources and Development, predominantly comprised of NH SCI state agency partners, which will help to ensure that state agencies institutionalize the plan and that sources of funding align with the plan."*

- GSF Detailed\_ScopeofWork document (pg 16/16)

The local, regional and state plans that are produced under this program, by contractual agreement, must align with federal plans. Once the plans are **institutionalized** into the policies of the Federal and State Agency partners, they can then be enforced as regulations with the force of law.

*"HUD is committed to ensuring that programs result in the achievement of HUD's strategic mission."*

- HUD NOFA document (pg 63)

The following programs/organizations are GSF partners. Each organization has direct input into local, regional and state policy via their appointed members, bypassing our elected government representatives.

**Federal Partner Programs (identified as "integration opportunities")**

Unified Planning Work Program Federal Highways

HUD 2010 Community Challenge Grant

FEMA Hazard Mitigation and Fluvial Erosion Planning

NTIA Funded Broadband Mapping & Regional Needs Assessment Planning

U.S. Economic Development Administration (EDA)

Special Economic Development and Redevelopment projects

U.S. Environmental Protection Agency

USDA Rural Community Development Initiative grant

National Oceanic & Atmospheric Administration (NOAA)

Federal Highway's Safe Routes To Schools

Climate Impact Assessments funded by NOAA, National Science Foundation, and the NHCF

**Granite State Future “Pay-to-Play” Special Interest Partners**

ActionMedia – (ActionMedia.org - Public Relations Firm)  
University of New Hampshire – (Carsey Institute - NH Listens)  
NH Charitable Foundation – (TLU Roundtable)  
Conservation Law Foundation (I-93)  
Healthy Eating Active Living  
Community Development Finance Authority  
Family Assistance Advisory Council of NH  
NH Department of Environmental Services  
NH Department of Transportation  
NH Housing Finance Authority  
NH Department of Cultural Resources  
NH Employment Security  
NH Department of Health and Human Services  
NH Department of Resources and Economic Development  
NH Office of Energy and Planning  
NH Community Loan Fund  
NH Creative Communities Network  
NH Municipal Association

**Other State Partners**

NH Energy and Climate Collaborative  
RPCs (appointed - advisory only)  
Cities, Towns, Counties (appointed representatives only)